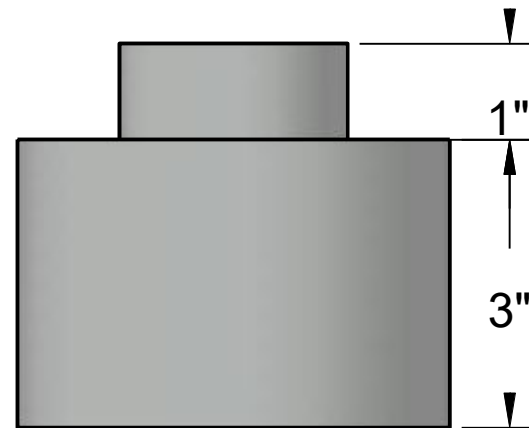
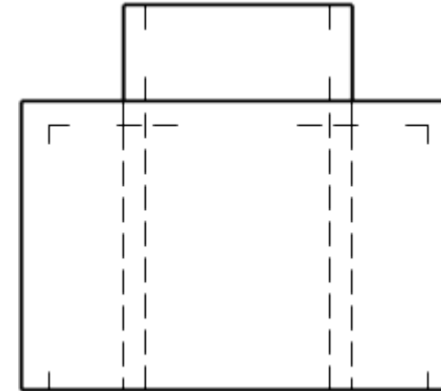
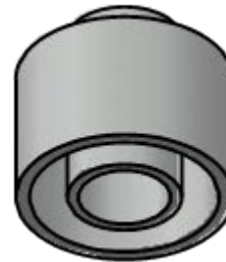


Dual Containment End Termination

NOMINAL SIZE	CARRIER SDR	CONTAINMENT SDR	CARRIER SIZE (IN.)	CONTAINMENT SIZE (IN.)
3"X1"	11	11	1.315	3.5
4"X1"	11	11 OR 17	1.315	4.5
4"X1.5"	11	11 OR 17	1.9	4.5
4"X2"	11	11 OR 17	2.375	4.5
6"X2"	11	11 OR 17	2.375	6.625
6"X3"	11	11 OR 17	3.5	6.625
6"X4"	11	11 OR 17	4.5	6.625
8"X4"	11 OR 17	11, 17, OR 26	4.5	8.625
8"X6"	11 OR 17	11, 17 OR 26	6.625	8.625
10"X6"	11 OR 17	11, 17 OR 26	6.625	10.75
12"X8"	11 OR 17	11, 17 OR 26	8.625	12.75
16"X10"	11 OR 17	11, 17, 26, OR 32.5	10.75	16
18"X12"	11 OR 17	11, 17, 26, OR 32.5	12.75	18
18"X14"	11 OR 17	11, 17, 26, OR 32.5	14	18



NOTES	
1.	Tolerances +/- 2"
2.	Angle tolerances +/- 2.0°
3.	Made from HDPE size specific pipe
4.	Follow industry standard fusion procedures
5.	Follow industry standard quality procedures
6.	Custom design available
7.	If specific dimensions needed, please call
8.	Larger sizes available upon request
9.	WPR based on PE 4710 for water at 73° F
10.	Ends counterbored upon request